

New South Wales Catholic Schools System Needs Based Funding Arrangement

January 2024

For the period from 1 January 2024 to 31 December 2029

Contents

Executive Summary	3
A. Purpose	3
B. About.....	3
C. Legislative funding structure	3
D. Overview of the funding flow.....	3
E. Summary of Needs-Based Funding Arrangement.....	4
F. Features of the new Funding Distribution Model	4
G. Rationale for the distribution approach.....	4
Appendix	5
H. Background to the CSNSW NBFA.....	5
Approved System Authority for the NSW Catholic Schools System.....	5
Legislative and Policy Framework	5
Section 78(5)	6
Choice and Affordability Fund.....	6
Response of the ASA for the NSW Catholic Schools System to Legislative Changes	6
I. Summary of CSNSW’s Needs-Based Funding Arrangement – “System Methodology”	8
Overview	8
Amount per student.....	8
Funding process	9
Overview of the funding flow	11
Rationale for the distribution approach.....	11
Governance and oversight of the funding distribution methodology	11
J. Stage One: Attraction of Grants from Governments to NSW Catholic Schools System	12
Funding sources included in the NBFA.....	12
K. Stage Two: Distribution of Grants from the ASA to Diocesan Schools Systems	13
L. Stage Three: Diocesan School Systems’ Deployment and Allocation of Funds for Schools	16
Diocesan School Systems	16
Deploying the funds.....	16
Assessing the needs of students and schools to determine resource deployment.....	17
M. Accountability for Use of Funding	19
N. The Need for Reserves	20
O. Financial Data Collections and Publication by Schools.....	21
P. Glossary.....	22

Q. Acronyms..... 25

R. Links..... 26

S. NSW Catholic System Schools 27

Executive Summary

A. Purpose

This document responds to the legislative obligation to make public relevant information and material explaining the Needs-Based Funding Arrangement (“NBFA”) as it applies to the deployment of the government recurrent funding for the benefit of the students in the New South Wales Catholic Schools System.

B. About

The NSW Catholic Schools System (“the System”) educates approximately 227,000 school students in 547 schools in NSW.

In 2024, the System will receive approximately \$3.65 billion of recurrent funding from the Commonwealth and NSW governments.

Further support is provided from fee income and other non-government contributions.

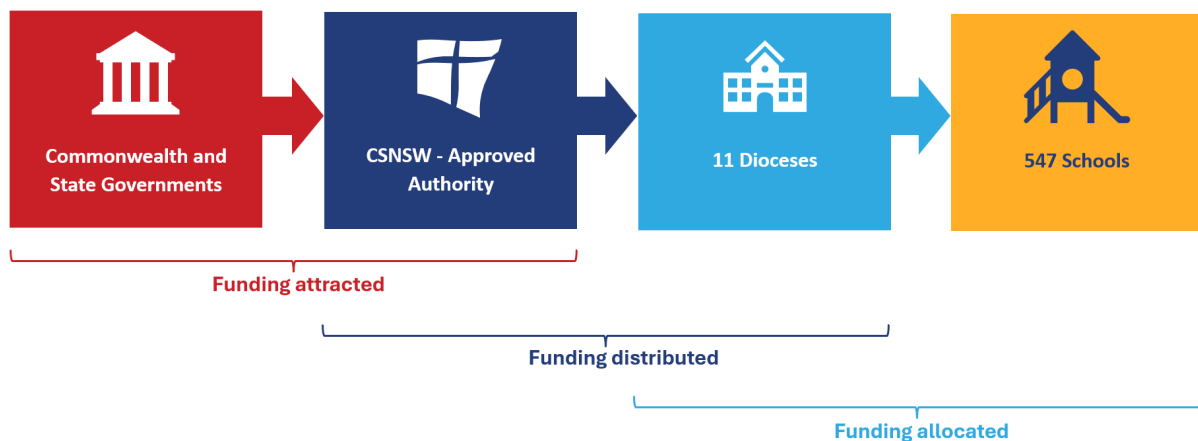
C. Legislative funding structure

The *Australian Education Act 2013* (“AEA” or “the Act”) and the *NSW Education Act 1990* (“the NSW Act”) are aligned as the funding structure for NSW non-government schools, including the New South Wales Catholic Schools System.

D. Overview of the funding flow

The recurrent funding flow can be illustrated as follows.

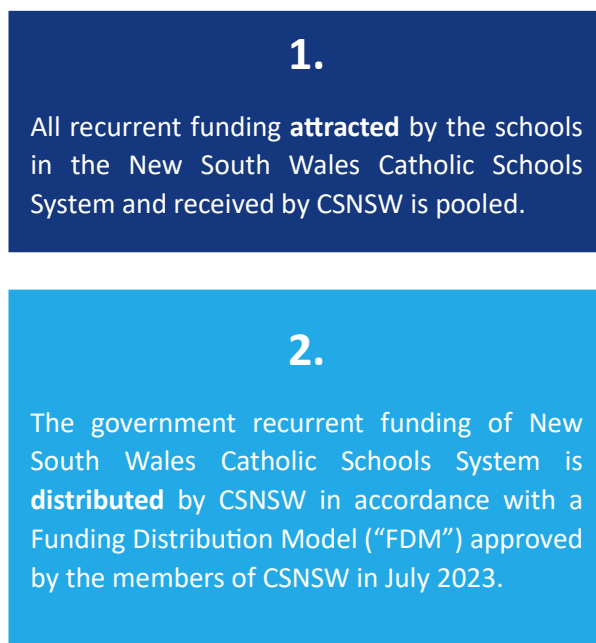
Figure 1: CSNSW New South Wales Catholic Schools System flow of government funding



E. Summary of Needs-Based Funding Arrangement

The Catholic Schools NSW Needs-Based Funding Arrangement (“NBFA”), as the ASA for the New South Wales Catholic Schools System responsible for distributing government recurrent funding, is summarised below.

Figure 2: Recurrent funding attracted and distributed



F. Features of the new Funding Distribution Model

The CSNSW Funding Distribution Model (“FDM”) starts on 1 January 2024.

1. It aligns with Commonwealth and State government funding legislation;
2. Each Diocesan School System (“DSS”) retains the prerogative of internal distribution subject to legislative and regulatory requirements; and,
3. The Choice and Affordability Fund (“CAF”) component of the FDM aligns with the sector’s advocacy to the Commonwealth and the original policy intent, namely the moderation of primary school fee levels in support of school choice objectives for schools that would otherwise face undue pressure to raise fees.

G. Rationale for the distribution approach

CSNSW, the Diocesan School Systems (or sub-systems), and the schools in the System recognise the legal obligation to demonstrate publicly that the recurrent funding from governments is distributed in accordance with the ‘needs-based’ principles of the Commonwealth legislation.

Appendix

H. Background to the CSNSW NBFA

Approved System Authority for the NSW Catholic Schools System

The Approved System Authority (“ASA”) for NSW Catholic System Schools was, from 1 January 1974 until 31 December 2017, the Catholic Education Commission of NSW (“CECNSW”).

From the start of 2018, this role was assumed by a new entity, Catholic Schools New South Wales Limited (“CSNSW”).

It should be noted that the role of the ASA as a funding body applies only to those NSW Catholic schools that are part of the NSW Catholic Schools System (“the System” or “New South Wales Catholic Schools System”).

Independent Catholic schools in NSW, sometimes called congregational schools or Religious Institute / Ministerial Public Juridic Persons (“RI/MPJP”) schools, are separate to the System as they are funded directly by governments.

Legislative and Policy Framework

The *Australian Education Act 2013* (“AEA” or “the Act”) came into effect on 1 January 2014. The AEA seeks to implement the Commonwealth’s response to recommendations from a review of funding of school education, known as “the Gonski Review”.

In response to the Commonwealth legislation, the *NSW Education Act 1990* (“NSW Act”) was amended to align both Commonwealth and State funding mechanisms for NSW non-government schools, including the New South Wales Catholic Schools System.

During 2017, the Australian government altered the funding arrangements and associated legislation for the 2018 year and beyond. The key elements of these funding arrangements are as follows:

- The re-affirmation and confirmation of the right of Approved System Authorities (“ASA”), such as CSNSW, to allocate their total grant funds to their system schools as they see fit, subject to the general provisions of needs-based funding arrangements as set out in the AEA.
- The use of the Nationally Consistent Collection of Data (“NCCD”) for students with disability to establish the funding for students with a disability for 2018 and beyond.
- Revised arrangements for transition to a consistent funding level standard across all Australian schools.

In response, in 2019 the NSW Government moved to adopt the funding approach taken by the Commonwealth government under the AEA.

Section 78(5)

The requirements for a NBFA, as defined under **subsection 78(5) of the Act**:

- (5) A needs-based funding arrangement that complies with this subsection:
 - (a) provides an amount per student that:
 - (i) represents the recurrent resources required to support a student with minimal educational disadvantage to achieve expected educational outcomes; and
 - (ii) takes account of efficiencies that can be realised while improving educational outcomes; and
 - (b) in addition to the amount per student mentioned in paragraph (a), provides loadings to students and schools with additional needs in order to support student achievement, including loadings for the following:
 - (i) students with disability;
 - (ii) Aboriginal and Torres Strait Islander students;
 - (iii) students with socio-educational disadvantage;
 - (iv) students who have low English proficiency;
 - (v) schools based on location;
 - (vi) schools based on size; and
 - (c) is publicly available and transparent.

Choice and Affordability Fund

In 2018 the Commonwealth government created the Choice and Affordability Fund (“CAF”), which supports schools in the non-government sector to support parental choice and provide affordable school options.

Response of the ASA for the NSW Catholic Schools System to Legislative Changes

The New South Wales Catholic Schools System is the largest non-government school system in Australia.

Like other large school systems, the System has sought to transition carefully and deliberately from its pre-2014 model for distributing Commonwealth and NSW Government grants to align with current requirements.

A programme of continuous improvements has been implemented by the ASA for the New South Wales Catholic Schools System from 2014. This has included:

- a) The reporting of recurrent funding allocations to the Australian Government Department of Education (“AGDOE”) under its Financial Accountability (“FA”) process, which involves reporting amounts of base funding and loadings for disadvantage for each of our 546 schools, backed by detailed financial accounting data.
- b) The reporting of detailed financial information on income and expenditure for each of our 546 schools for AGDOE’s annual Financial Questionnaire (“FQ”) process, including:
 - reconciliations of the FQ data to audited financial statements;
 - reviews of detailed accounting policies and practices to ensure increased data conformity and integrity including expert advice from specialist accounting firms; and,
 - participation in and submissions to expert panels addressing the complexities of introducing and refining reporting policies capable of being implemented effectively across all Australian schools and myriad systems within Australian school education.
- c) The reporting of data for each school to the Australian Curriculum, Assessment and Reporting Authority (“ACARA”) for publishing on the MySchool website, which is accessible by the general public.
- d) The reporting to the Australian Charities and Non-for-Profits Commission (“ACNC”) of the Annual Information Statement for each registered school charity and the publishing of audited financial statements for the relevant school entities.
- e) The introduction and implementation of a best practice assessment process for the NCCD for students with disability.
- f) Continuing refinement of the funding deployment methodologies within the System to accommodate ongoing legislative and regulatory changes, experience with effectiveness of funding deployment methods and better recognition and targeting of each specific student’s needs.

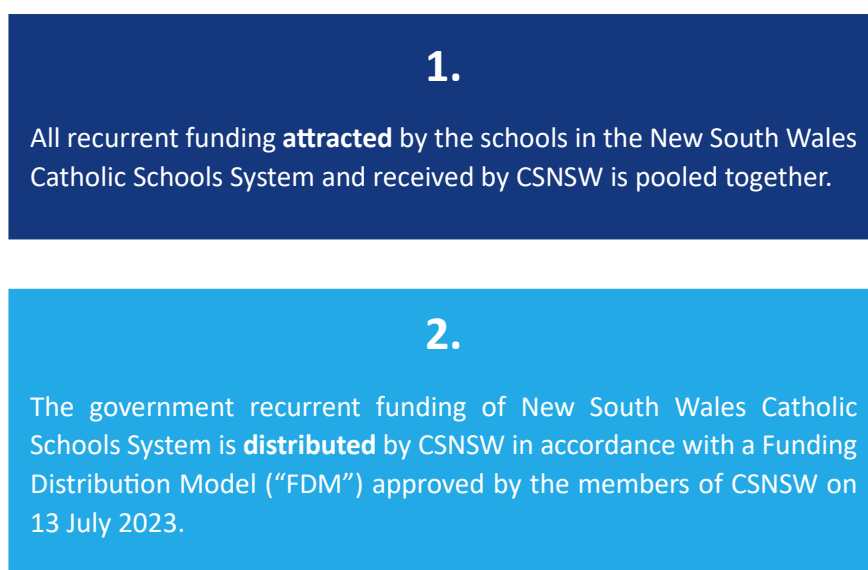
In short, the New South Wales Catholic Schools System has made considerable improvements in the allocation, reporting and transparency of its needs-based funding model for a system of 227,000 students, approximately 26,000 staff and 546 schools. These improvements and enhancements are continuing.

I. Summary of CSNSW’s Needs-Based Funding Arrangement – “System Methodology”

Overview

The Catholic Schools NSW Needs-Based Funding Arrangement (“NBFA”), as the ASA for the New South Wales Catholic Schools System responsible for distributing government recurrent funding, is summarised below.

Figure 3: Recurrent funding attracted and distributed



Amount per student

Under the new FDM, the distribution to each Diocesan Schools Office (“DSO”) is the sum of the amounts that are attracted to the New South Wales Catholic Schools System by the schools of each the respective subsystems, being the respective Diocesan School Systems, less an amount retained (currently less than 0.7% of recurrent funding) to fund the operations of CSNSW.

This approach is a change from the FDM employed up to 2023 (for the four years from 1 January 2020 to 31 December 2023), which included an arrangement whereby the distribution to nine dioceses was marginally reduced, compared to the funds attracted by the schools of that diocese, to provide additional funding to support the schools of two dioceses, which would otherwise have to raise fees quite considerably in order to resource their schools appropriately. This financial support is now provided under the new FDM from the Choice and Affordability Fund (“CAF”).

The current CSNSW FDM is for the distribution of recurrent funding from 1 January 2024 to 31 December 2029.

Funding process

Funds are distributed to schools in a two-stage “cascade” process:

1. In the **first** stage, CSNSW, as the ASA, distributes funds to each of the 11 constituent Diocesan Schools Systems (“DSS”) within the New South Wales Catholic Schools System.
2. In the **second** stage, each of the 11 DSS deploys or allocates the funds it receives from CSNSW for the benefit of its own schools within its diocese.

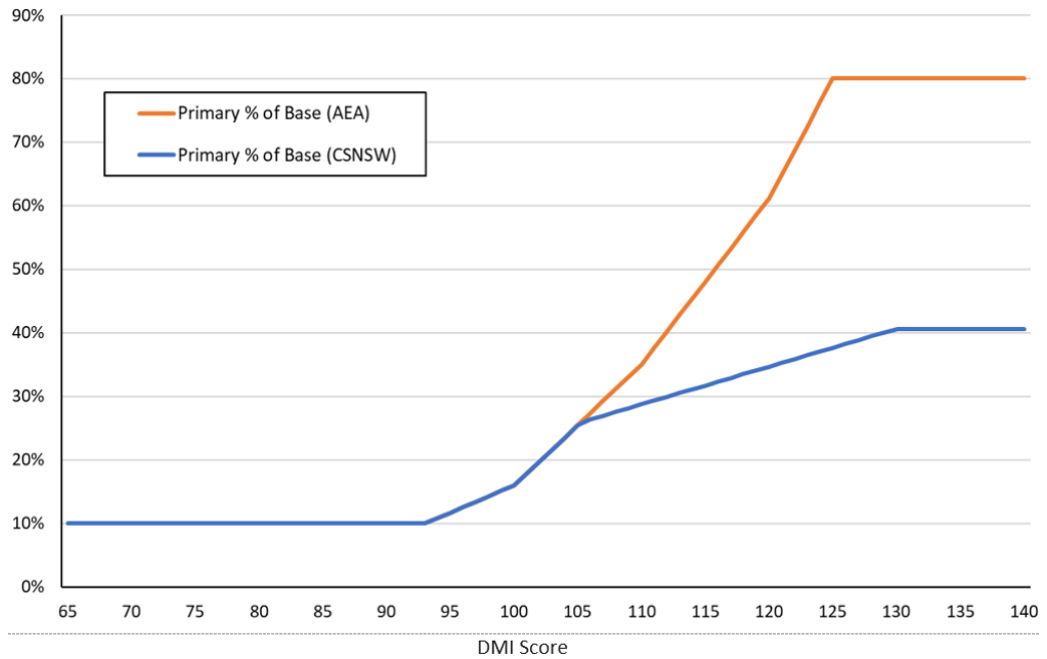
As mentioned in the Executive Summary, the features of the new FDM include:

- The FDM aligns with the remaining term of the current agreement with the Commonwealth and State governments (2024-2029), delivering operational certainty to the Diocesan Schools Offices (“DSO”);
- Each DSS (that is, the eleven sub-systems) retain the prerogative of internal distribution subject to legislative and regulatory requirements; and,
- The Choice and Affordability Fund (“CAF”) component of the FDM aligns with the sector’s advocacy to the Commonwealth and the original policy intent, namely the moderation of primary school fee levels in support of school choice objectives for schools that would otherwise face undue pressure to raise fees.

The distribution methodology as per the new FDM in some more detail is as follows:

- Under the Gonski approach to non-government school funding the amount of ‘base’ funding a school attracts per student is set as a proportion of the Schooling Resource Standard (“SRS”), being an amount determined by the government as needed to educate a child at a primary or a secondary school.
- That proportion is set at 90% for a ‘low-income school’ (as measured by a Direct Measure of (parents’) Income – “DMI”) reducing progressively to 20% for a ‘high-income school’. The orange line in *Figure 4* below shows the operation of the government’s approach for primary schools. (Note the curve shows the inverse, being the discount from the SRS that each student attracts rather than the proportion of the SRS actually paid.)
- The distribution to give effect to the CAF distribution in dot point a. below is determined by the application of CSNSW-specific discount to the Schooling Resource Standard (“SRS”).
- An amended Capacity to Contribute (“CTC”) curve is used to establish the per student entitlement of each primary school. The blue line in *Figure 4* below shows CSNSW-specific discount to the SRS. Schools with a DMI in excess of 105 are notionally* provided with more funding per student than they attracted. (*‘Notionally’ because actual funding is determined by their DSO.)
- In the new FDM this additional support to schools with a DMI above 105 is being funded from the CAF.
- The CAF monies are to be allocated:
 - a. Principally to provide support to certain schools that would otherwise face upwards pressures on their fees in order to resource their schools appropriately; and,
 - b. A residual amount, which is proposed to be distributed to remote schools that are in financial need.

Figure 4: AEA CTC curve versus CSNSW CTC curve for primary schools. (Capacity to Contribute (or Discount to the SRS) versus DMI score.)

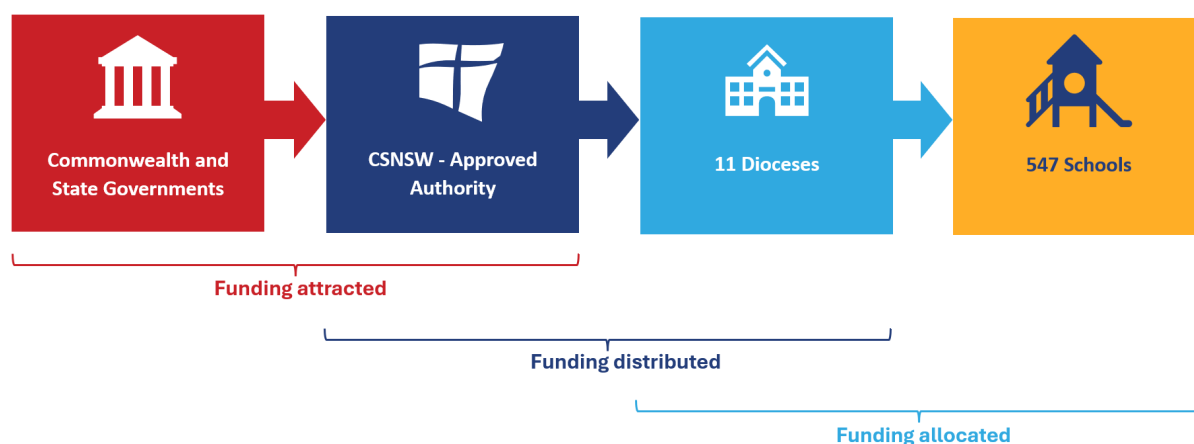


- The recurrent funding includes loadings for students in priority cohorts and disadvantaged schools to address specific areas of educational disadvantage and are fully publicly funded. There are two school-based loadings and four student-based loadings:
 1. School size
 2. School location
 3. Students with disability loading
 4. Aboriginal and Torres Strait Islander loading
 5. Socio-educational disadvantage loading
 6. Low-English proficiency loading
- Under the CSNSW FDM all loadings are passed through to the DSSs, for each DSO to determine the best and most appropriate use, according to need. A feature of the legislation is that governments recognise that Systems and sub-systems retain the right to distribute the aggregated funding they receive.

Overview of the funding flow

The recurrent funding flow can be illustrated as follows.

Figure 5: CSNSW New South Wales Catholic Schools System flow of government funding



Rationale for the distribution approach

CSNSW, the Diocesan School Systems (or sub-systems), and the schools in the System recognise the legal obligation to demonstrate publicly that the recurrent funding from governments is distributed in accordance with the ‘needs-based’ principles of the Commonwealth legislation. The Commonwealth has previously expressed concern about the standard of transparency applied by some DSOs.

The CSNSW Funding Distribution Model increases a focus on improved transparency regarding the distribution of government recurrent funds to New South Wales Catholic Schools System.

Governance and oversight of the funding distribution methodology

CSNSW oversees an audit and assurance process which monitors compliance and reporting as it relates to government recurrent funding.

The CSNSW Financial Compliance Framework (“FCF”) culminates in annual financial certifications to the Australian and New South Wales Governments plus other regulatory lodgements (including block allocations, acquittals, and the Financial Questionnaire).

The FCF is applied to the eleven NSW diocesan school systems and overseen by a committee of the CSNSW Board.

The FCF includes various compliance guidance and reference materials, including the following:

1. Related Party Transactions Policy, and guidance on reasonable market value assessments;
2. Financial accounting guidelines; and,
3. Audit arrangements for the Diocesan Schools Offices’ auditors.

J. Stage One: Attraction of Grants from Governments to NSW Catholic Schools System

Funding sources included in the NBFA

DSSs are responsible for the operations of schools within their own diocesan jurisdiction and, as such, are responsible for the total income available for expenditure on their schools.

This income is derived from the following sources:

1. Government recurrent grants from both Commonwealth and State governments totalling \$3.65 billion (as forecast for 2024);
2. Government grants for 'targeted programs' which are hypothecated for defined purposes - often being very small amounts relative to the recurrent funding grants (less than \$10 million);
3. Private income from parental school fees, totalling approximately \$550 million (as estimated for 2024); and,
4. Other private income, including donations and investment income (including interest earned on government grants) totalling approximately \$100 million (as estimated for 2024).

In summary, the large majority of contributions to income come from government recurrent grants and school fees.

For the purposes of reporting to government, the precise amounts of each category of income are accounted for and reported to the dollar.

In relation to the policies for the setting of school fees, the following applies:

1. School fees vary widely across the subsystems (Diocesan School Systems ("DSS")). The degree of differentiation of fee levels varies considerably across dioceses with a trend to greater differentiation in line with understanding of the capacity to contribute of the school community.
2. Accommodation for the capacity of individual families to pay fees is also provided at the local school level. Typically, at the discretion of the local school principal, fee reductions are offered for families who cannot afford the fees or are experiencing financial hardship. Fee discounts are routinely offered for siblings. These fee reductions appear in the form of reduced fee collection rates.

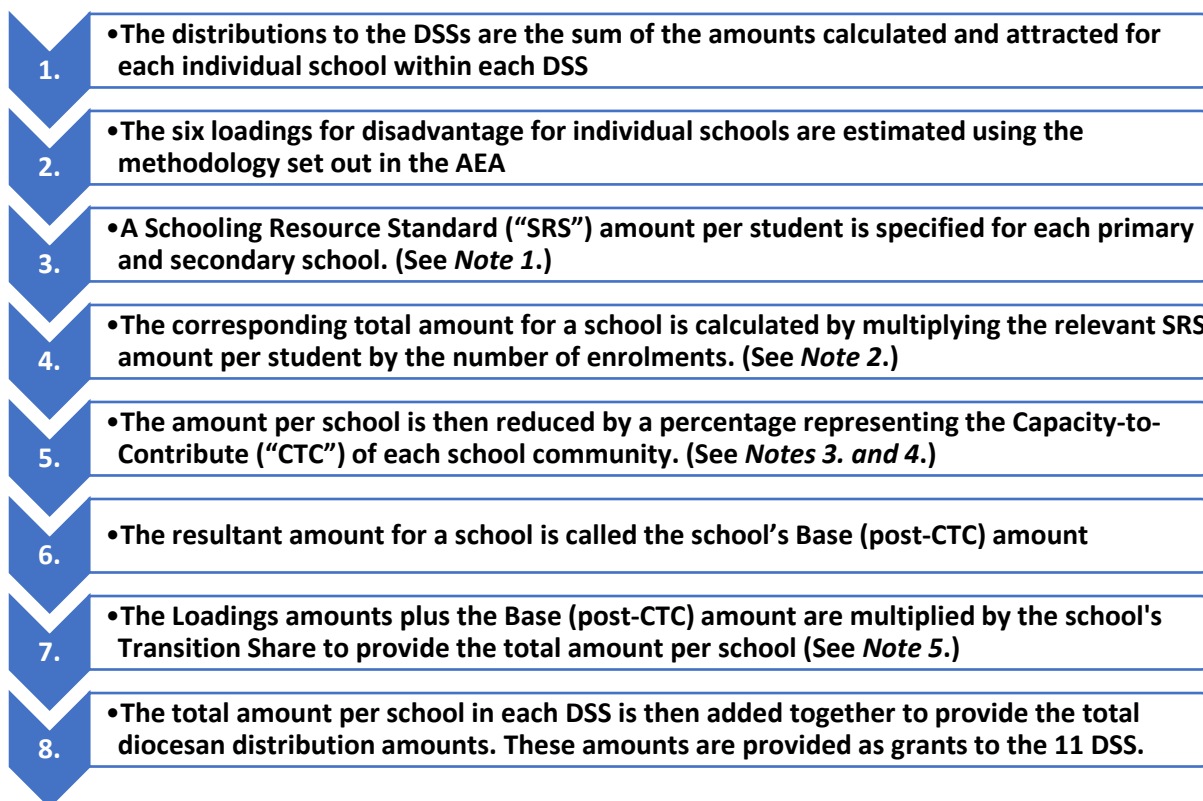
In relation to the expenditure of income, an important point is that all the income is pooled (apart from the small amount of targeted grant income) and expenditure for schools allocated from the total pool.

The pooled funds available for recurrent funding is therefore approximately \$3.65 billion in 2024.

K. Stage Two: Distribution of Grants from the ASA to Diocesan Schools Systems

The first stage of this cascade process, the distribution to DSS, is based on a funding distribution model (“FDM”) with the same components as the AEA model, albeit with different values for some key parameters.

Figure 6: Elements of the Funding Distribution Model



Notes to Figure 6:

1. These parameters have been set at values slightly less than the amounts in the AEA. This is so because, since 2018, the Australian Government funding model establishes a target amount that each school should theoretically attract; and a “transition pathway” that gradually moves the amount of funds attracted by the school from what has been the historical level to the target amount over time, with the aim that all schools will be paid their target amount of SRS by 2029.
2. Enrolments at a school are finally determined by the annual August school Census.
3. The CTC for a school community is estimated using the school’s DMI score and a CTC curve (determined by AGDOE).
4. The CTC curve used by the System is essentially the same as that specified in the AEA, except for an extra amount that is provided to a primary school with a DMI / CTC greater than 105. This supplementary amount is funded from the CAF.
5. The Transition Share is an interim arrangement to fund Australian schools by both Commonwealth and State government to their targeted amount or share. For non-government schools the Commonwealth targeted share is 80% and the State share is 20%.

The latest Australian Education Act ('AEA') funding methodology was introduced in 2014. There was previously a different funding methodology to calculate the Commonwealth and State recurrent funding. It was unlikely that a school was being funded at exactly 80% and 20% target, or theoretical, amount.

The amount a school receives in recurrent funding, divided by the theoretical amount is known as the Transition Share. This is referred as 'starting share' which, for schools receiving more than the recurrent funding as calculated using the new recurrent funding methodology, is then adjusted on a straight-line basis to reach Commonwealth and State share by 2029.

CSNSW regularly updates a forecast of total general recurrent funding to be received by each Diocesan School Office (“DSO”), taking into account revised estimates of student enrolments at each school.

The precise amount of funding received by each DSO in a year reflects the student population reported in the August school Census. Actual payment of the recurrent funding is in instalments during the year, following the receipt of tranches of recurrent funding from the Commonwealth and State governments.

It should be noted that the methodology for funding distributions to DSOs has evolved considerably since the introduction of the AEA in 2014, reflecting a progressive realignment of funding which follows the principles specified in the AEA.

L. Stage Three: Diocesan School Systems' Deployment and Allocation of Funds for Schools

Diocesan School Systems

Each diocese has a dedicated Diocesan Schools Office (“DSO”), sometimes called by a variety of names including Catholic Schools Office or Catholic Education Office, that is responsible for the administration and operation of the schools within that diocese.

A dedicated DSO in each diocese allows for a closer level of understanding of the needs of each school community. Each DSO is able to use its local knowledge of the schools to balance the needs of its student population within its diocese and determine the appropriate deployment of resources to each school.

The DSO oversees the operation of all System schools in the relevant Diocesan School System (“DSS”).¹

The various DSOs provide reports on both educational and financial activity to CSNSW, which collates and reviews the information before submission to AGDOE and other regulatory bodies to meet the System’s responsibilities as the ASA.

Each DSO has its own management structure and individual processes for the governance and operation of its schools. Further information on each DSO can be found on their websites. (See section below headed “Links”.)

Deploying the funds

Note that the term “deploy” is sometimes used, rather than “distribute” or “allocate”, because the dioceses typically spend the funds centrally on behalf of and for the benefit of schools. A key example of this is teachers’ salaries. Payroll is managed centrally by the DSO for all staff. Teachers’ pays are typically paid directly by the DSO.

Other forms of deployment include paying directly for other operational costs such as utilities and services and IT systems. In some dioceses, some grant funding is paid by the DSO directly to schools, which are required to assess their students’ needs and utilise the funding to address the particular need/s.

The expenditure for schools and school systems typically falls into the following categories:

- Staff salaries including:
 - teaching staff and principals, assistant principals, etc.;
 - school support staff such as librarians, office staff and maintenance staff;
 - DSO management and administrative support staff; and,
 - additional staff for special purposes such as counsellors, etc.
- School operating costs, such as office services, IT, accounting, audit, etc
- Facility and property costs, such as utilities, maintenance, etc
- Debt servicing costs (interest and principal repayments)
- Capital equipment (Depreciation and amortisation of assets - not cash)

¹ Each DSS is recognised by the National School Resourcing Board (“NSRB”) as a “sub-system”.

Staff salaries typically constitute over 75% of the total expenditure. Furthermore, the other costs are largely fixed, at least in the short term. Consequently, the most important expenditure decisions relate to the allocation of staff resources.

Furthermore, the minimum salaries of teaching staff and others are set according to the relevant employee enterprise agreements and based on years of service, level of seniority, etc.

Deploying school system funds according to need is primarily concerned with the allocation of staff to schools.

In the first instance, each DSO uses a set of guidelines incorporating various staffing formulas to assist in this allocation process. These initial staffing allocations are typically refined by an expert group of educators who consider a school's particular circumstances and needs and adjust the original allocation appropriately.

In summary:

- The DSO will review total forecast income from all sources (primarily government general recurrent grants and school fees) ahead of the school year and determine how these funds will be deployed across all schools, taking into account the needs-based requirements under the legislation
- Each DSO employs education policy personnel, funding policy personnel and other school teaching and learning experts to help make these assessments.
- Each DSO has the flexibility to develop and tailor their funding arrangements to suit the needs profile of their schools and students.

Assessing the needs of students and schools to determine resource deployment

A major factor influencing student learning outcomes and addressing need is teacher availability and quality. Considerable work therefore goes into the process for determining the right teacher allocation for each school.

Each DSO uses its own staffing guidelines - which differ for Primary, Secondary, Combined and Special schools - as a basis for setting school staff numbers. These guidelines contain teacher-to-student ratios consistent with the requirements in the NSW Catholic Schools Enterprise Agreement.

A preliminary allocation of teachers is made for each school based on its forecast enrolments. Experts within each DSO then review the outcomes of these formulae and then adjust final teacher allocations to meet the particular needs of student groups or school communities. This includes factors such as:

- the profile of the current student population
- specific needs of students in particular classes
- the existing teaching staff and their skill sets
- requirements to run certain classes to fill curriculum
- meeting the requirements of Vocational Educational Training
- very large class sizes that could be split into streams
- longevity, experience and qualifications of the school principal
- availability of staff in the diocese, and

- any other particular issues to be addressed at a school.

Staffing allocations consider - explicitly and implicitly - the six categories of disadvantage listed below, which are specified in the AEA:

- Students with Disabilities
- Aboriginal or Torres Strait Islander students
- Students with Low English Proficiency
- Low Index of Community Socio-Educational Advantage (“ICSEA”)
- Small schools
- Rural and Remote schools

Furthermore, diocesan allocations of staff to schools must necessarily address additional factors - outside those stipulated in the AEA - in order to properly meet the needs of students.

For example, a recent initiative has been to provide extra resources to address matters of student well-being that have surfaced across all socio-economic groups. These extra resources have been reported as an extra loading in the annual reporting to AGDOE. Another example is that DSOs identify students who may be struggling in their educational progress, irrespective of their socio-economic, cultural or ethnic backgrounds. Despite not being attributable to the broad sociological categories specified in the AEA loadings, these students have real needs, which are addressed through extra resources.

Additional staff may be allocated to assist at schools. For example, it is common to provide teaching aides or support staff at schools with students with disabilities, high indigenous populations, students with language background other than English, and schools that have low Index of Community Socio-Educational Advantage (“ICSEA”) scores.

The staffing allocations will always consider a school with relatively low enrolments. An entire school may be so small that the teacher to student ratio would only allocate a handful of teachers. However, an assessment of how many teachers is actually required to meet the needs of that student population could yield considerably more staff and therefore more staff resources will be deployed to that school.

Schools in remote locations also tend to be smaller schools, and therefore the consideration of any additional resources deployed to remote schools is often tied into the staffing allocation when considering size of the school. In need incentives are provided to staff when working in remote locations, such as a car allowance or teacher’s housing, and this forms part of the resource deployment for that school.

In addition to staff allocations to schools, each DSO utilises different strategies and programs to address the various types of need identified. These take the form of special learning facilities, extra classes, additional materials, specifically designed learning programs and other initiatives.

Funding for these programs also forms part of the centrally managed functions of the DSO. Once qualifying schools are identified, any resources allocated to these schools form part of their needs-based deployment of government recurrent funding. Specialist DSO staff, employed to support the design and implementation of any needs-based strategy, also form part of the resources ultimately deployed for the benefit of schools.

M. Accountability for Use of Funding

CSNSW, as the Approved System Authority, receives general recurrent grant funds from both the Commonwealth and the State. This recurrent funding, along with any interest earned on those funds, are regarded as one pool of funds and expended entirely for the benefit of school students at schools within the System.

The total government general recurrent funding for any year is entirely expended within the year on eligible school-related items. None of the recurrent funding is retained as surplus funds. Any retained surplus funds are derived solely from private income sources, which are predominantly school fees from parents.

An annual certification is provided to the Commonwealth government by CSNSW to that effect and that certification is externally audited.

The reporting of government funding for individual schools is carried out in accordance with the instructions from the Australian Government Department of Education (“AGDOE”).

School fees and other income from private sources are only spent or committed to be spent on school-related activities. In addition, private income is generally not all spent in the year in which it is received because it is necessary and prudent to reserve some of these funds for future non-recurrent needs (See the section on Reserves (below).)

N. The Need for Reserves

Given that there appears to be some misconceptions regarding cash reserves, the following comments address the need for reserves, which should not be confused with any concept of “profit”.

The Australian Charities and Not-for-Profit Commission (“ACNC”) has publicly stated that registered charities (such as the NSW Catholic Schools System) need to maintain a sufficient level of reserves to ensure their financial viability and to plan for future activities.²

More specifically, the need for funds to be retained for reserves includes:

- provision for long-service leave and other employee leave entitlements, which are generally provided for in cash within the not-for-profit sector;
- amounts of income used to cover depreciation and amortisation expenses which are non-cash expenses but are nonetheless necessary to cover future capital replacement and refurbishment costs;
- funds for new and expanded school facilities to meet enrolment demand from population growth and other factors; and,
- working capital reserves, required in every organisation to ensure financial viability in the event of delays in receipt of payments, floods, fires or other risks. (This is particularly important in the school education sector where only a very small proportion of expenditure is discretionary, at least within the short run annual budget cycle, as the education, care and welfare of students is paramount.)
- DSO and/or schools’ expenditure, which for the New South Wales Catholic Schools System amounts to approximately \$3.6 billion annually, is predominantly for teacher and support staff salaries and utilities, none of which can or should be curtailed at short notice due to unforeseen emergencies.

² This position is reinforced in both the Australian and NSW Education Acts.

O. Financial Data Collections and Publication by Schools

CSNSW provides detailed financial information to AGDOE annually for each of its System schools in the form of the Financial Questionnaire (“FQ”), the Block Allocations under the Financial Accountability (“FA”) process, and detailed supporting data including audited financial statements and reconciliations.

This data is then used to create the dataset reported by ACARA on the publicly accessible MySchool website and also the dataset reported on the publicly accessible website of the Australian Charities and Not-for Profits Commission (“ACNC”).

To meet reporting requirements for the NSW Education Standards Authority (“NESA”) each school in the New South Wales Catholic Schools System must publish an annual report on school performance, which includes financial information.

P. Glossary

Term	Definition
Allocation	Public funding provided by governments to a System.
Amount per student	Terminology used in subsection 78(5) of the Act to describe the base funding a system distributes to its schools, calculated based on student enrolments.
Approved Authority	The legal body approved by the Commonwealth Minister for Education to administer recurrent funding for a school. The approved authority for a government school is its relevant state or territory government. The approved authority for a non-government school is the legal body approved for that school.
Approved System Authority (“System”)	An Approved Authority for more than one school that redistributes Commonwealth recurrent funding to its member schools using its own needs-based funding arrangement (“NBFA”). All government schools belong to their state or territory approved system authority. Most Catholic and some independent schools also belong to an approved system authority.
<i>Australian Education Act 2013</i> (“the Act” or “AEA”)	The <i>Australian Education Act 2013</i> (“the Act” or “AEA”) is the principal legislation governing the provision of Commonwealth funding to government and non- government schools as well as supporting the objectives of intergovernmental agreements on school education.
<i>Australian Education Regulation 2023</i> (“the Regulations”)	The <i>Australian Education Regulation 2023</i> (“the Regulations”) provides more detail to support the operation of the <i>Australian Education Act 2013</i> . It outlines the conditions required to be met in order to receive funding under the Act. The 2023 Regulations commenced as of 21 July 2023, repealing and replacing the previous regulations.
Australian Government funding	Recurrent funding provided by the Australian Government to approved authorities for the purposes of school education. This funding is calculated using the Schooling Resource Standard.
Base Funding	A school’s Schooling Resource Standard includes base funding and up to six needs-based loadings based on the characteristics of students enrolled at the school and the school itself.
Capacity to Contribute (“CTC”) score	A Capacity to Contribute (“CTC”) score is an element of the Schooling Resource Standard funding arrangements. It is used when calculating Australian Government recurrent funding for most non-government schools. Also described as a measure of a non-government school community's capacity to contribute to the ongoing costs of running the school. A school's CTC percentage affects the amount of base recurrent funding the school attracts from the Australian Government under the Act by way of a discount to funding.
Catholic Schools NSW Limited (“CSNSW”)	CSNSW is, amongst other things, the Approved Authority and the Approved System Authority (“System”) for Catholic System Schools in New South Wales.
Distribution	Public funding that Systems provide to schools.

Loadings	Additional funding provided to students and schools with additional needs in order to support student achievement. Therefore, as well as Base Funding, a school's Schooling Resource Standard can include loadings based on four categories of student need and two further loadings for small schools and regional and remote schools.
National School Resourcing Board ("NSRB")	Review board that conducts independent reviews of the operation of the <i>Australian Education Act 2013</i> and, in particular, of arrangements and requirements relating to funding for schools.
Nationally Consistent Collection of Data on School Students with Disability ("NCCD")	The Nationally Consistent Collection of Data on School Students with Disability (also known as the "NCCD") is an annual collection that counts the number of students at a school receiving an adjustment due to disability, the category of disability and the level of educational adjustment they are receiving to enable them to participate in education on the same basis as other students.
Needs-based funding	Australian Government school funding that is fairly and transparently distributed according to students' educational needs. It is also described as a way of distributing funding to ensure all students are supported to achieve at school regardless of where they live, their background, or their socio-economic status.
Needs-based funding arrangement ("NBFA")	System distribution methodology to provide funding to its schools, based on its own assessment of the needs of its schools and students, in accordance with subsection 78(5) of the Act.
Non-Government Representative Body ("NGRB")	A legal body the Commonwealth Minister for Education has approved under the <i>Australian Education Act 2013</i> to administer certain funding for non-government schools. CSNSW is a NGRB.
Non-Government School ("NGS")	A school registered to provide education in a state or territory which is not owned or operated by the state or territory government. Sometimes also known as a 'private' school.
Public funding	Recurrent funding for school education provided by the Australian Government and state and territory governments.
Recurrent funding	Annual funding to support the day-to-day operation of a school, including teaching and non-teaching staff salaries, and school operating costs.
School sectors	The term 'sector' is used to differentiate between the main types of schools in Australia: government and non-government.
Schooling Resource Standard ("SRS")	An estimate of how much total public funding a school needs to meet its students' educational needs. It is calculated using a formula in the Act that consists of a base amount for all schools, plus loadings for schools with students with greater needs. The base amount and most of the loadings are worked out by reference to an amount per student called the SRS funding amount.
Sub-system	A subsidiary entity, such as a diocese, that is responsible for the day-to-day operations and financial affairs of a subset of schools within a system; while remaining accountable to the System.

<p>Transition Share</p>	<p>When the current recurrent funding methodology was legislated, very few schools were receiving their exact, or target, Schooling Resource Standard (SRS) share.</p> <p>Recurrent funding for non-government schools has transitioned, or continues to transition, from previous funding levels to the target SRS share.</p> <p>Those non-government schools funded <u>above</u> the target SRS share, because of funding calculated under the previous funding methodology, are being smoothly transitioned to their target share (by 2029).</p> <p>A school's recurrent funding amount is calculated using their Transition Share, which is a percentage that is calculated by dividing a school's 'former' recurrent funding entitlement for a year by a school's recurrent funding using the 'new' funding methodology.</p>
--------------------------------	------------------------------------------------------------------------------------------------------------------------------------------------------------------------------------------------------------------------------------------------------------------------------------------------------------------------------------------------------------------------------------------------------------------------------------------------------------------------------------------------------------------------------------------------------------------------------------------------------------------------------------------------------------------------------------------------------------------------------------------------------------------------------------------------------------------------------------------

Q. Acronyms

Acronym	Explanation
ACARA	Australian Curriculum, Assessment and Reporting Authority
ACNC	Australian Charities and Not-for-profits Commission
AEA	<i>Australian Education Act 2013</i> (“the Act” or “AEA”)
AGDOE	Australian Government Department of Education
ASA	Approved System Authority
CAF	Choice and Affordability Fund
CECNSW	Catholic Education Commission of New South Wales (now superseded by CSNSW)
CSNSW	Catholic Schools NSW Limited
CTC	Capacity to Contribute
DMI	Direct Measure of Income
DSO	Diocesan Schools Office
DSS	Diocesan Schools Systems
FA	Financial Accountability
FQ	Financial Questionnaire
FDM	Funding Distribution Model
NBFA	Needs-Based Funding Arrangement
NCCD	Nationally Consistent Collection of Data on School Students with Disability
NGRB	Non-Government Representative Body
NGS	Non-government school
NSRB	National School Resourcing Board
RI/MPJP	Religious Institute / Ministerial Public Juridic Person
NSWCSS	New South Wales Catholic Schools System
SES	Socio-economic status
SRS	Schooling Resource Standard

R. Links

Catholic Schools NSW Limited (“CSNSW”)

[Home - Catholic Schools NSW \(csnsw.catholic.edu.au\)](https://csnsw.catholic.edu.au)

CSNSW – Funding

[Funding - Catholic Schools NSW \(csnsw.catholic.edu.au\)](https://csnsw.catholic.edu.au)

The eleven Diocesan Schools Systems in New South Wales:

1. Armidale

Catholic Schools Office Diocese of Armidale: <https://arm.catholic.edu.au/>

2. Bathurst

Catholic Education Diocese of Bathurst: <https://www.bth.catholic.edu.au/Community---Schools>

3. Broken Bay

Catholic Schools Broken Bay: <https://csbb.catholic.edu.au/>

4. Canberra-Goulburn

Catholic Education Archdiocese of Canberra & Goulburn: <https://cg.catholic.edu.au/>

5. Lismore

Diocese of Lismore Catholic Schools: <https://www.lism.catholic.edu.au/>

6. Maitland-Newcastle

Catholic Schools Office Diocese of Maitland-Newcastle: <https://www.mn.catholic.edu.au/>

7. Parramatta

Catholic Schools Parramatta Diocese: <https://www.parra.catholic.edu.au/>

8. Sydney

Sydney Catholic Schools: <https://sydcatholicschools.nsw.edu.au/>

9. Wagga Wagga

Catholic Education Diocese of Wagga Wagga: <https://ww.catholic.edu.au/>

10. Wilcannia-Forbes

Catholic Education Wilcannia-Forbes: <https://www.wf.catholic.edu.au/>

11. Wollongong

Catholic Education Diocese of Wollongong: <https://www.dow.catholic.edu.au/>

S. NSW Catholic System Schools

List of schools that are part of the New South Wales Catholic System Schools:

School Name	Location	Diocesan School System (DSS) / Sub-system
All Hallows School	Gulgong	Bathurst
All Hallows Catholic Primary School	Five Dock	Sydney
All Saints Primary School	Tumbarumba	Wagga Wagga
The Assumption School	Bathurst West	Bathurst
Henschke Primary School	Wagga Wagga	Wagga Wagga
St Oliver's Primary School	Harris Park	Parramatta
Blessed Sacrament Catholic Primary School	Clifton Gardens	Sydney
Brigidine College Randwick	Randwick	Sydney
St Patrick's Parish School	Cooma	Canberra & Goulburn
Catherine McAuley Westmead	Westmead	Parramatta
Mercy Catholic College	Chatswood	Broken Bay
Sacred Heart School	Cootamundra	Canberra & Goulburn
Marian Catholic College	Griffith	Wagga Wagga
Cerdon College	Merrylands	Parramatta
Southern Cross Catholic Vocational College	Burwood	Sydney
St Mary's Cathedral College	Sydney	Sydney
St Paul's Catholic College	Manly	Broken Bay
Christ the King Catholic School, Bass Hill	Yagoona	Sydney
Corpus Christi Catholic Primary School	St Ives	Broken Bay
Corpus Christi Primary School	Waratah	Maitland-Newcastle
La Salle Catholic College	Bankstown	Sydney
De La Salle Catholic College	Caringbah	Sydney
De La Salle College	Revesby Heights	Sydney
Mackillop College	Bathurst	Bathurst
Domremy Catholic College	Five Dock	Sydney
St Augustine's School	Narromine	Wilcannia-Forbes
Holy Cross College	Ryde	Sydney
Holy Cross Catholic Primary School	Woollahra	Sydney
Holy Cross Primary School	Glendale	Maitland-Newcastle
Holy Cross Catholic Primary School	Helensburgh	Wollongong
Holy Family Primary School	Granville East	Parramatta
Holy Family Catholic Primary School	Lindfield	Broken Bay
Holy Family Primary School	Merewether Beach	Maitland-Newcastle
Holy Innocents' Catholic Primary School	Croydon	Sydney
Holy Name Primary School	Forster	Maitland-Newcastle
Holy Spirit Primary School	Lavington	Wagga Wagga
Holy Trinity School	Inverell	Armidale
Holy Trinity West Wagga	Ashmont	Wagga Wagga

Holy Trinity Primary School	Granville	Parramatta
Immaculate Heart of Mary Catholic Primary School	Sefton	Sydney
La Salle Academy	Lithgow	Bathurst
McAuley Catholic Primary School	Rose Bay	Sydney
Marcellin College	Randwick	Sydney
Maria Regina Catholic Primary School	Avalon Beach	Broken Bay
Marist College Kogarah	Bexley	Sydney
Marist College	Eastwood	Sydney
Marist Catholic College Penshurst	Mortdale	Sydney
Champagnat Catholic College	Maroubra	Sydney
Marist College North Shore	North Sydney	Sydney
Sacred Heart Catholic Primary School	Mosman	Sydney
Marist Sisters College	Woolwich	Sydney
Mater Dei Catholic Primary School	Blakehurst	Sydney
Mater Maria Catholic College	Warriewood	Broken Bay
Our Lady of Mount Carmel Catholic Primary School	Waterloo	Sydney
Sacred Heart Catholic School	Pymble	Broken Bay
Mount St John Primary School	Dorrigo	Lismore
Mount St Joseph Milperra	Milperra	Sydney
Mount St Patrick Primary School	Murwillumbah	Lismore
Mount St Patrick College	Murwillumbah	Lismore
Nagle College	Blacktown South	Parramatta
Our Lady Help of Christians Catholic Primary School	Epping	Broken Bay
Our Lady Help of Christians Primary School	Lismore South	Lismore
Our Lady of Dolours Catholic Primary School	Chatswood	Broken Bay
Our Lady of Fatima Catholic Primary School	Caringbah	Sydney
Our Lady of Fatima Catholic Primary School	Kingsgrove	Sydney
Our Lady of Good Counsel Catholic Primary School	Forestville	Broken Bay
Our Lady of Lourdes Primary School	Baulkham Hills South	Parramatta
Our Lady of Lourdes Catholic Primary School	Earlwood	Sydney
Our Lady of Lourdes Primary School	Seven Hills	Parramatta
Our Lady of Lourdes Primary School	Tarro	Maitland-Newcastle
Our Lady of Mercy Catholic College Burraneer	Cronulla	Sydney
Saints Peter and Paul Primary School	Goulburn	Canberra & Goulburn
Our Lady of Mt Carmel Catholic Primary School	Bonnyrigg	Sydney
Our Lady of Mount Carmel Primary School	Wentworthville	Parramatta
Our Lady of Perpetual Succour Catholic Primary School	West Pymble	Broken Bay
Our Lady of the Nativity Primary School	Lawson	Parramatta
Mary Mackillop Catholic College	Wakeley	Sydney
Our Lady of the Rosary Catholic Primary School	Fairfield	Sydney
Our Lady of the Rosary Catholic Primary School	Kensington	Sydney
Our Lady of the Rosary Primary School	St Marys	Parramatta
Our Lady of the Rosary Catholic Primary School	Shelly Beach	Broken Bay
Our Lady of the Rosary Catholic Primary School	Waitara	Broken Bay
Our Lady of the Sacred Heart College	Kensington	Sydney
Our Lady of the Sacred Heart Catholic Primary School	Randwick	Sydney

Our Lady of Victories Primary School	Shortland	Maitland-Newcastle
Parramatta Marist High School	Westmead	Parramatta
Patrician Brothers' College	Blacktown	Parramatta
Patrician Brothers College	Fairfield	Sydney
Delany College	Granville	Parramatta
Prouille Catholic Primary School	Wahroonga	Broken Bay
Regina Coeli Catholic Primary School	Beverly Hills	Sydney
Sacred Heart School	Boggabri	Armidale
Sacred Heart Catholic School	Cabramatta	Sydney
Sacred Heart Primary School	Coolah	Bathurst
Sacred Heart Catholic Primary School	Mona Vale	Broken Bay
Sacred Heart School	Tocumwal	Wagga Wagga
Sacred Heart Catholic Primary School	Villawood	Sydney
Sacred Heart Primary School	Westmead	Parramatta
St Agatha's Catholic Primary School	Pennant Hills	Broken Bay
St Agnes' Catholic Primary School	Matraville	Sydney
St Aidan's Catholic Primary School	Maroubra	Sydney
St Aidan's Primary School	Rooty Hill	Parramatta
St Aloysius Catholic Primary School	Cronulla	Sydney
St Ambrose Catholic Primary School	Concord West	Sydney
St Andrew's Catholic Primary School	Malabar	Sydney
St Andrew's Primary School	Marayong	Parramatta
Galilee Catholic Primary School	Bondi Beach	Sydney
St Anne's Primary School	Albury North	Wagga Wagga
St Anne's Catholic Primary School	Strathfield South	Sydney
St Anne's Central School	Temora	Canberra & Goulburn
St Anthony's Catholic Primary School	Clovelly	Sydney
St Anthony's Primary School	Girraween	Parramatta
St Anthony's Primary School	Kingscliff	Lismore
St Augustine's Primary School	Coffs Harbour	Lismore
St Bede's Primary School	Braidwood	Canberra & Goulburn
St Benedict's Primary School	Edgeworth	Maitland-Newcastle
St Bernadette's Primary School	Castle Hill	Parramatta
St Bernadette's Primary School	Dundas Valley	Parramatta
St Bernadette's Primary School	Lalor Park	Parramatta
St Bernard's Catholic Primary School	Berowra Heights	Broken Bay
St Bernard's Catholic Primary School	Botany	Sydney
St Brigid's Primary School	Coonamble	Bathurst
St Brendan's Catholic Primary School	Annandale	Sydney
St Brendan's Catholic Primary School	Bankstown	Sydney
St Brendan's Primary School	Ganmain	Wagga Wagga
St Brigid's Catholic Primary School	Gwynneville	Wollongong
St Brigid's Catholic Primary School	Marrickville	Sydney
St Brigid's Primary School	Kyogle	Lismore
St Brigid's Primary School	Raymond Terrace	Maitland-Newcastle
St Canice's Primary School	Katoomba	Parramatta

St Catherine Labouré Catholic Primary School	GyMEA	Sydney
St Cecilia's Catholic Primary School	Balgowlah	Broken Bay
St Cecilia's Catholic Primary School	Wyong	Broken Bay
St Charles Catholic Primary School	Ryde	Sydney
St Charles' Primary School	Waverley	Sydney
St Christopher's Catholic Primary School	Panania	Sydney
St Philip Neri Catholic Primary School	Northbridge	Broken Bay
St Clare's College	Waverley	Sydney
St Columban's Primary School	Mayfield	Maitland-Newcastle
St Columba's School	Yeoval	Bathurst
St Columba's Primary School	Adamstown	Maitland-Newcastle
St Columba's Catholic Primary School	Leichhardt North	Sydney
St Columbkille's Catholic Primary School	Corrimal	Wollongong
St Declan's Catholic Primary School	Penshurst	Sydney
St Edward's School	Canowindra	Bathurst
St Felix Catholic Primary School	Bankstown	Sydney
St Fiacre's Catholic Primary School	Leichhardt	Sydney
St Finbarr's Primary School	Byron Bay	Lismore
St Finbar's School	Sans Souci	Sydney
St Finbar's Primary School	Glenbrook	Parramatta
St Francis de Sales Regional College	Leeton	Wagga Wagga
St Francis de Sales' Catholic Primary School	Woolooware	Sydney
St Francis of Assisi Catholic Primary School	Warrawong	Wollongong
St Francis of Assisi Regional Catholic Primary School	Paddington	Sydney
St Francis Xavier's College	Hamilton	Maitland-Newcastle
St Francis Xavier Catholic School Ashbury	Croydon Park	Sydney
St Francis Xavier's Catholic Primary School	Arncliffe	Sydney
St Francis Xavier Primary School	Ballina	Lismore
St Francis Xavier Primary School	Lake Cargelligo	Canberra & Goulburn
St Gabriel's Catholic School	Bexley	Sydney
St Gerard's Catholic Primary School	Carlingford	Broken Bay
St Gertrude's Catholic Primary School	Smithfield	Sydney
St Ignatius' School	Bourke	Wilcannia-Forbes
St James Catholic Primary School	Glebe	Sydney
St James Primary School	Kotara South	Maitland-Newcastle
St James Primary School	Muswellbrook	Maitland-Newcastle
St Jerome's Catholic Primary School	Punchbowl	Sydney
St Joachim's Catholic Primary School	Lidcombe	Sydney
St Joan of Arc Catholic Primary School	Haberfield	Sydney
St John Bosco Catholic Primary School	Engadine	Sydney
St John's Primary School	Dubbo	Bathurst
St John's College	Dubbo	Bathurst
St John's Catholic Primary School	Auburn	Sydney
St John the Evangelist Catholic Primary School	Campbelltown	Wollongong
St John's Catholic Primary School	Dapto	Wollongong
St John the Baptist Primary School	Maitland	Maitland-Newcastle

St John's School	Baradine	Bathurst
St John's School	Cobar	Wilcannia-Forbes
St John's Primary School	Lambton	Maitland-Newcastle
St John The Apostle Catholic Primary School	Narraweena	Broken Bay
St John's Primary School	Riverstone	Parramatta
St John's School	Trangie	Wilcannia-Forbes
St John The Baptist Catholic Primary School	Freshwater	Broken Bay
St John The Baptist Catholic Primary School	Woy Woy South	Broken Bay
St John Vianney's Catholic Primary School	Greenacre	Sydney
St John Vianney's Primary School	Morisset	Maitland-Newcastle
St Patrick's Primary School	Lochinvar	Maitland-Newcastle
St Joseph's Primary School	South Murwillumbah	Lismore
St Joseph's Primary School	Denman	Maitland-Newcastle
St Joseph's Primary School	West Kempsey	Lismore
St Joseph's Primary School	Laurieton	Lismore
Ss Peter and Paul Catholic Primary School	Kiama	Wollongong
St Joseph's Catholic School	Oberon	Bathurst
St Joseph's Catholic College	Gosford East	Broken Bay
Holy Spirit Infants School	Abermain	Maitland-Newcastle
St Joseph's Primary School	Coraki	Lismore
St Joseph's Catholic School	Eugowra	Bathurst
St Joseph's Primary School	Finley	Wagga Wagga
St Joseph's Primary School	Gloucester	Maitland-Newcastle
St Joseph's Primary School	Leeton	Wagga Wagga
St Joseph's Primary School	Merewether	Maitland-Newcastle
St Joseph's Catholic Primary School	Narrabeen	Broken Bay
St Joseph's School	Portland	Bathurst
St Joseph's Primary School	Port Macquarie	Lismore
St Joseph's Catholic Primary School	Rockdale	Sydney
St Joseph's Primary School	Taree	Maitland-Newcastle
St Joseph's Primary School	Woodburn	Lismore
St Joseph's Primary School	Blayney	Bathurst
St Joseph's High School	Aberdeen	Maitland-Newcastle
St Joseph's School	Adelong	Canberra & Goulburn
St Joseph's Primary School	Alstonville	Lismore
St Joseph's School	Barraba	Armidale
St Bernard's Primary School	Batehaven	Canberra & Goulburn
St Francis Xavier's Primary School	Belmont	Maitland-Newcastle
St Joseph's Catholic Primary School	Belmore	Sydney
St Joseph's School	Bombala	Canberra & Goulburn
St Joseph's School	Boorowa	Canberra & Goulburn
St Joseph's Primary School	Bulahdelah	Maitland-Newcastle
St Joseph's Catholic Primary School	Bulli	Wollongong
St Kevin's Primary School	Cardiff	Maitland-Newcastle
St Joseph's Primary School	Charlestown	Maitland-Newcastle
St Joseph's Catholic Primary School	Como	Sydney

St Joseph's Primary School	Condobolin	Wilcannia-Forbes
St Joseph's Primary School	Culcairn	Wagga Wagga
St Joseph's Primary School	Dungog	Maitland-Newcastle
St Joseph's Catholic Primary School	Enfield	Sydney
St Joseph's School	Gilgandra	Bathurst
St Joseph's Primary School	Grafton South	Lismore
St Joseph's School	Grenfell	Canberra & Goulburn
St Joseph's School	Hillston	Wilcannia-Forbes
St Joseph's Primary School	Junee	Wagga Wagga
St Joseph's Primary School	Kingswood	Parramatta
Holy Spirit Primary School	Kurri Kurri	Maitland-Newcastle
St Joseph's Primary School	Lockhart	Wagga Wagga
St Joseph's Primary School	Maclean	Lismore
St Joseph's Primary School	East Maitland	Maitland-Newcastle
St Joseph's School	Manildra	Bathurst
St Joseph's Primary School	Merriwa	Maitland-Newcastle
St Joseph's School	Molong	Bathurst
St Joseph's School	Mungindi	Armidale
St Joseph's Primary School	Narrandera	Wagga Wagga
St Joseph's School	Nyngan	Wilcannia-Forbes
St Joseph's Catholic Primary School	Oatley	Sydney
St Joseph's School	Peak Hill	Wilcannia-Forbes
St Joseph's School	Quirindi	Armidale
St Joseph's Catholic Primary School	Riverwood	Sydney
St Joseph's School	Tamworth West	Armidale
St Joseph's School	Tenterfield	Armidale
St Joseph's Primary School	Kilaben Bay	Maitland-Newcastle
St Joseph's School	Uralla	Armidale
St Joseph's School	Walgett	Armidale
St Joseph's School	Warialda	Armidale
St Joseph's Primary School	Wauchope	Lismore
St Joseph's Primary School	Wee Waa	Armidale
St Joseph's Primary School	Wingham	Maitland-Newcastle
St Joseph the Worker Catholic Primary School	Auburn South	Sydney
St Joseph's School	Jerilderie	Wagga Wagga
St Kevin's Catholic Primary School	Dee Why	Broken Bay
St Kevin's Catholic Primary School	Eastwood	Sydney
St Kieran's Catholic Primary School	Manly Vale	Broken Bay
St Laurence's Primary School	Dubbo	Bathurst
St Lawrence's Primary School	Coonabarabran	Bathurst
St Leo's Catholic College	Wahroonga	Broken Bay
St Luke's Catholic Primary School	Revesby	Sydney
St Margaret Mary's Primary School	Merrylands	Parramatta
St Margaret Mary's Catholic Primary School	Randwick	Sydney
St Mark's Catholic Primary School	Drummoyne	Sydney
St Martha's Catholic Primary School	Strathfield	Sydney

St Mary of the Angels Primary School	Guyra	Armidale
St Mary's Primary School	Armidale	Armidale
St Mary's Primary School	Bellingen	Lismore
St Mary's Catholic Primary School	Concord	Sydney
All Saints Catholic College	Liverpool	Sydney
St Mary's High School	Gateshead	Maitland-Newcastle
St Mary's Catholic School	Wellington	Bathurst
St Mary's School	Batlow	Canberra & Goulburn
St Mary's Primary School	Bowraville	Lismore
St Mary's Catholic College	Casino	Lismore
St Mary's School	Corowa	Wagga Wagga
St Mary's School	Crookwell	Canberra & Goulburn
St Mary's Primary School	Dubbo	Bathurst
St Mary's Catholic Primary School	Erskineville	Sydney
St Mary's School	Hay	Wilcannia-Forbes
St Mary's Catholic Primary School	Manly	Broken Bay
St Mary's School	Moruya	Canberra & Goulburn
St Mary's Primary School	Orange East	Bathurst
St Mary's Primary School	Rydalmere	Parramatta
St Mary's Primary School	Scone	Maitland-Newcastle
St Mary's Primary School	Warners Bay	Maitland-Newcastle
St Mary's School	Warren	Wilcannia-Forbes
St Mary's School	Yoogali	Wagga Wagga
St Mary's Primary School	Young	Canberra & Goulburn
St Mary's Star of the Sea Catholic Primary School	Hurstville	Sydney
St Mary's Star of the Sea Catholic Primary School	Milton	Wollongong
St Mary's War Memorial School	West Wyalong	Canberra & Goulburn
St Matthew's Catholic School	Mudgee	Bathurst
St Matthew's Primary School	Windsor	Parramatta
St Mel's Catholic Primary School	Campsie	Sydney
St Michael's School	Dunedoo	Bathurst
St Michael's School	Baulkham Hills	Parramatta
St Michael's Catholic Primary School	Belfield	Sydney
St Michael's Primary School	Blacktown South	Parramatta
St Michael's School	Coolamon	Wagga Wagga
St Michael's Catholic Primary School	Daceyville	Sydney
St Michael's School	Deniliquin	Wilcannia-Forbes
St Michael's Catholic Primary School	Lane Cove	Sydney
St Michael's School	Manilla	Armidale
St Michael's Catholic Primary School	Meadowbank	Sydney
St Michael's Catholic Primary School	Mittagong	Wollongong
St Michael's Primary School	Nelson Bay	Maitland-Newcastle
St Michael's Catholic Primary School	Nowra	Wollongong
St Michael's Catholic Primary School	Stanmore	Sydney
St Michael's Catholic Primary School	Thirroul	Wollongong
St Monica's Primary School	North Parramatta	Parramatta

St Monica's Primary School	Richmond	Parramatta
St Nicholas of Myra Primary School	Penrith	Parramatta
St Patrick's Marist College	Dundas	Parramatta
St Patrick's Catholic Primary School	Asquith	Broken Bay
St Patrick's Primary School	Blacktown	Parramatta
St Patrick's Catholic Primary School	Gosford East	Broken Bay
St Patrick's Catholic Primary School	Sutherland	Sydney
St Patrick's Parish School	Albury	Wagga Wagga
St Patrick's Primary School	Bega	Canberra & Goulburn
St Patrick's School	Brewarrina	Wilcannia-Forbes
St Patrick's Primary School	Cessnock	Maitland-Newcastle
St Patrick's School	Griffith	Wagga Wagga
St Patrick's Primary School	Guildford	Parramatta
St Patrick's Primary School	Holbrook	Wagga Wagga
St Patrick's Catholic Primary School	Kogarah	Sydney
St Patrick's School	Lithgow	Bathurst
St Patrick's Primary School	Macksville	Lismore
St Patrick's Primary School	Parramatta	Parramatta
St Patrick's Catholic Primary School	Port Kembla	Wollongong
St Patrick's Catholic Primary School	Summer Hill	Sydney
St Patrick's Primary School	Swansea	Maitland-Newcastle
St Patrick's School	Trundle	Wilcannia-Forbes
St Patrick's School	Walcha	Armidale
St Patrick's Primary School	Wallsend	Maitland-Newcastle
St Paul of the Cross Catholic Primary School	Dulwich Hill	Sydney
St Paul's Catholic Primary School	Albion Park	Wollongong
St Paul's Catholic Primary School	Camden	Wollongong
St Paul's Primary School	Gateshead	Maitland-Newcastle
St Paul's Catholic Primary School	Moss Vale	Wollongong
St Paul's Primary School	Rutherford	Maitland-Newcastle
St Peter Chanel Catholic Primary School	Regents Park	Sydney
St Peter's Primary School	Coleambally	Wagga Wagga
St Peter's Primary School	Stockton	Maitland-Newcastle
St Philomena's School	Bathurst	Bathurst
St Philomena's School	Moree	Armidale
St Pius' Catholic Primary School	Enmore	Sydney
St Pius X High School	Adamstown	Maitland-Newcastle
St Pius X Primary School	Dubbo West	Bathurst
St Pius X Catholic Primary School	Unanderra	Wollongong
St Pius X Primary School	Windale	Maitland-Newcastle
St Raphael's Catholic School	Cowra	Bathurst
St Raphael's Catholic Primary School	Hurstville	Sydney
Our Lady Queen of Peace Primary School	Greystanes	Parramatta
St Patrick's School	Gundagai	Canberra & Goulburn
St Therese Catholic Primary School	Sadleir	Sydney
St Therese's Catholic Primary School	Denistone	Sydney

St Therese's Catholic Primary School	Lakemba	Sydney
St Therese Catholic Primary School	Mascot	Sydney
St Therese Catholic Primary School	Padstow Heights	Sydney
St Therese Catholic Primary School	West Wollongong	Wollongong
St Thomas More's Catholic School	Brighton-Le-Sands	Sydney
St Thomas Aquinas Primary School	Springwood	Parramatta
St Thomas' Catholic Primary School	Willoughby	Broken Bay
O'Connor Catholic College	Armidale	Armidale
St Ursula's College	Kingsgrove	Sydney
St Vincent's Catholic Primary School	Ashfield	Sydney
St Xavier's School	Gunnedah	Armidale
St Francis Xavier's School	Narrabri	Armidale
San Clemente High School	Mayfield	Maitland-Newcastle
Catherine McAuley Catholic Primary School	Orange	Bathurst
St Paul's Catholic College	Greystanes	Parramatta
Holy Spirit Catholic Primary School	North Ryde	Sydney
Our Lady Star of the Sea Catholic School	Miranda	Sydney
Stella Maris Catholic Primary School	Shellharbour	Wollongong
St Clare's High School	Taree	Maitland-Newcastle
Villa Maria Catholic Primary School	Hunters Hill	Sydney
Christ the King Primary School	North Rocks	Parramatta
Sacred Heart Primary School	Koorinal	Wagga Wagga
St Paul the Apostle Primary School	Winston Hills	Parramatta
St Paul's College	West Kempsey	Lismore
St Rose Catholic Primary School	Collaroy Plateau	Broken Bay
St Therese's Primary School	New Lambton	Maitland-Newcastle
St Therese's Community School	Wilcannia	Wilcannia-Forbes
St Joseph's School	Balranald	Wilcannia-Forbes
Caroline Chisholm College	Glenmore Park	Parramatta
Our Lady Queen of Peace Catholic Primary School	Gladesville	Sydney
St Mary's Catholic Primary School	Noraville	Broken Bay
St Anthony's Catholic Primary School	Marsfield	Sydney
St Mary's Primary School	Casino	Lismore
St John's Primary School	Mullumbimby	Lismore
Cathedral School	Bathurst	Bathurst
St Thomas Aquinas' Catholic Primary School	Bowral	Wollongong
St Francis Xavier's Catholic Primary School	Lurnea	Sydney
St Joseph's Catholic Primary School	Moorebank	Sydney
Hennessy Catholic College	Young	Canberra & Goulburn
St Anthony's Catholic Primary School	Picton	Wollongong
James Sheahan Catholic High School	Orange	Bathurst
St Joseph's Primary School	Goulburn North	Canberra & Goulburn
Holy Family School	Kelso	Bathurst
Our Lady of the Way Primary School	Emu Plains	Parramatta
St Mary's Catholic Primary School	Georges Hall	Sydney
Good Shepherd Primary School	Plumpton	Parramatta

St Columba's Catholic College	Springwood	Parramatta
Our Lady Star of the Sea Catholic Primary School	Terrigal	Broken Bay
St Martin's Catholic Primary School	Davidson	Broken Bay
Our Lady of the Rosary Catholic Primary School	Wyoming	Broken Bay
St Thomas More Catholic Primary School	Campbelltown	Wollongong
St John Bosco College	Engadine	Sydney
Our Lady of the Rosary Primary School	Kellyville	Parramatta
John Therry Catholic High School	Rosemeadow	Wollongong
Gilroy Catholic College	Castle Hill	Parramatta
Mary Help of Christians Primary School Sawtell	Toormina	Lismore
St Joseph's Catholic High School	Albion Park	Wollongong
Holy Family Catholic Primary School	Ingleburn	Wollongong
St Agnes' Primary School	Port Macquarie	Lismore
St John Paul College	Coffs Harbour	Lismore
St Dominic's Centre	Mayfield	Maitland-Newcastle
St Mary Mackillop Primary School	South Penrith	Parramatta
Marion Catholic Primary School	Horsley Park	Sydney
Holy Spirit College	Bellambi	Wollongong
St Paul's High School	Booragul	Maitland-Newcastle
Sacred Heart Primary School	Mt Druitt South	Parramatta
Casimir Catholic College	Marrickville	Sydney
Trinity Catholic Primary School, Murrumburrah	Murrumburrah	Canberra & Goulburn
Freeman Catholic College	Bonnyrigg Heights	Sydney
Mary Immaculate Catholic Primary School	Bossley Park	Sydney
Holy Spirit Primary School	St Clair	Parramatta
St John Vianney's Primary School	Doonside	Parramatta
Mount Carmel Catholic College	Varroville	Wollongong
Mary Immaculate Catholic Primary School	Eagle Vale	Wollongong
McCarthy Catholic College	Emu Plains	Parramatta
Bede Polding College	South Windsor	Parramatta
Holy Family Catholic Primary School	Menai	Sydney
Mary Immaculate Primary School	Quakers Hill	Parramatta
Corpus Christi Primary School	Cranebrook	Parramatta
St Madeleine's Primary School	Kenthurst	Parramatta
Marian Catholic College	Kenthurst	Parramatta
Our Lady Help of Christians Catholic Primary School	Rosemeadow	Wollongong
St Patrick's College	Sutherland	Sydney
St John Fisher Catholic Primary School	Tumbi Umbi	Broken Bay
Emmaus Catholic College	Kemps Creek	Parramatta
Holy Family School	Parkes	Wilcannia-Forbes
St John The Evangelist Catholic High School	Nowra	Wollongong
Mater Dei Catholic School	Wagga Wagga	Wagga Wagga
Sacred Heart Parish Primary School	Broken Hill	Wilcannia-Forbes
John the Baptist Catholic Primary School	Bonnyrigg Heights	Sydney
St Brendan's Catholic Primary School	Lake Munmorah	Broken Bay
Holy Cross Catholic Primary School	Kincumber	Broken Bay

Holy Family Primary School	Luddenham	Parramatta
St Joseph's College	Banora Point	Lismore
St Francis of Assisi Primary School	Glendenning	Parramatta
St Joseph's School	Glen Innes	Armidale
McAuley Catholic College	Clarenza Via Grafton	Lismore
St Brigid's Catholic Primary School	Coogee	Sydney
Trinity Catholic Primary School	Kemps Creek	Parramatta
De La Salle Catholic College, Cronulla	Cronulla	Sydney
McAuley Catholic Central School	Tumut	Canberra & Goulburn
St Laurence's School	Forbes	Wilcannia-Forbes
St Gregory's Primary School	Queanbeyan	Canberra & Goulburn
All Saints College	Maitland	Maitland-Newcastle
Aquinas Catholic College	Menai	Sydney
St Edward's Primary School	Tamworth	Armidale
St Peter's Primary School	Port Macquarie	Lismore
St Clare's Catholic Primary School	Narellan Vale	Wollongong
Bethany Catholic Primary School	Glenmore Park	Parramatta
Chisholm Catholic Primary School	Bligh Park	Parramatta
Bethany College	Hurstville	Sydney
St Francis Xavier Primary School	Woolgoolga	Lismore
St Mary - St Joseph Catholic Primary School	Maroubra Beach	Sydney
St Joseph's Primary School	Wagga Wagga	Wagga Wagga
Carroll College	Broulee	Canberra & Goulburn
Trinity Catholic College	Auburn	Sydney
MacKillop College Port Macquarie	Port Macquarie	Lismore
St Joseph's Primary School	Tweed Heads	Lismore
St James Primary School	Banora Point	Lismore
Mt Carmel School	Yass	Canberra & Goulburn
St James Primary School	Yamba	Lismore
Holy Family Catholic Primary School	Skennars Head	Lismore
St John Paul II Catholic College	Schofields	Parramatta
St Joseph's Primary School	Schofields	Parramatta
Nazareth Catholic Primary School	Shellharbour City Centre	Wollongong
Fr John Therry Catholic Primary School	Balmain	Sydney
Good Samaritan Catholic College	Hinchinbrook	Sydney
Good Shepherd Catholic Primary School	Hoxton Park	Sydney
Magdalene Catholic High School	Narellan	Wollongong
Xavier Catholic College Ballina	Skennars Head	Lismore
Holy Cross Primary School	Glenwood	Parramatta
St Andrews College	Marayong	Parramatta
St Catherine of Siena Catholic Primary School	Prestons	Sydney
Holy Spirit Catholic College	Lakemba	Sydney
Xavier College	Llandilo	Parramatta
Kildare Catholic College	Wagga Wagga	Wagga Wagga
St Peter's Catholic College	Tuggerah	Broken Bay

St Nicholas' Primary School	Tamworth	Armidale
McCarthy Catholic College	Tamworth	Armidale
Trinity Catholic College	Goulburn	Canberra & Goulburn
Mater Dei Catholic College	Wagga Wagga	Wagga Wagga
St John's College Woodlawn	Lismore	Lismore
St Angela's Primary School	Castle Hill	Parramatta
Lumen Christi Catholic College	Pambula Beach	Canberra & Goulburn
Mackillop Catholic College	Warnervale	Broken Bay
Holy Family Primary School	Emerton	Parramatta
Holy Spirit Catholic Primary School	Carnes Hill	Sydney
St Christopher's Catholic Primary School	Holsworthy	Sydney
John XXIII Catholic Primary School	Stanhope Gardens	Parramatta
St Mary's Primary School	Grafton	Lismore
St Catherine's Catholic College	Singleton	Maitland-Newcastle
Xavier High School	Albury	Wagga Wagga
St Mary's College	Gunnedah	Armidale
Corpus Christi Catholic High School	Oak Flats	Wollongong
Clancy Catholic College	West Hoxton	Sydney
St Clare's Catholic High School	Hassall Grove	Parramatta
St Agnes Catholic High School	Rooty Hill	Parramatta
Loyola Senior High School	Mount Druitt	Parramatta
St Mark's Catholic College	Stanhope Gardens	Parramatta
Newman Senior Technical College	Port Macquarie	Lismore
Mother Teresa Primary School	Westmead	Parramatta
St Joseph's Regional College	Port Macquarie	Lismore
Our Lady of the Angels Primary School	Kellyville	Parramatta
St Justin's Catholic Primary School	Oran Park	Wollongong
St Benedict's Catholic College	Oran Park	Wollongong
Rosary Park Catholic School	Branxton	Maitland-Newcastle
St Ambrose Primary School	Pottsville	Lismore
St Cathage's Primary School	Lismore	Lismore
Good Samaritan Catholic Primary School	Fairy Meadow	Wollongong
St Brigid's Catholic College	Lake Munmorah	Broken Bay
St Aloysius Catholic Primary School	Chisholm	Maitland-Newcastle
Our Lady of the Assumption Catholic Primary School	North Strathfield	Sydney
Eileen O'Connor Catholic College	Lewisham	Sydney
St Luke's Catholic College (Primary)	Marsden Park	Parramatta
St Luke's Catholic College (Secondary)	Marsden Park	Parramatta
St Patrick's Catholic Primary School	Mortlake	Sydney
St Anthony of Padua Catholic School	Austral	Sydney
St Bede's Catholic High School	Chisholm	Maitland-Newcastle
St Francis Catholic College	Edmondson Park	Wollongong
St Lukes Arrunga	Marsden Park	Parramatta
Catherine McAuley Catholic College	Medowie	Maitland-Newcastle
Santa Sophia Catholic College (Secondary)	Schofields	Parramatta
St Joseph's College Lochinvar	Lochinvar	Maitland-Newcastle

Santa Sophia Primary School	Kellyville	Parramatta
St Laurence Flexible Learning Centre	Broadmeadow	Maitland-Newcastle
St Joseph's Rosebery	Kensington	Sydney

[https://catholicschoolsnsw.sharepoint.com/respol/projects/2018/needs based funding arrangements \(nbfa\)/drafts/nswcss needs based funding arrangement 2024 to 2029 - draft v0.7.docx](https://catholicschoolsnsw.sharepoint.com/respol/projects/2018/needs%20based%20funding%20arrangements%20(nbfa)/drafts/nswcss%20needs%20based%20funding%20arrangement%202024%20to%202029%20-%20draft%20v0.7.docx)